



Theydon Park Road, Epping, CM16

BUTLER & STAG



A substantial detached residence situated within the sought-after area of Theydon Bois, which is renowned for its charm and possessing a real village community.



Freehold

- Detached Family Home
- 175' West Facing Garden
- Stunning Throughout
- Five Bedrooms/ Three Bathrooms
- Stunning Views Over Countryside
- Off Street Parking

Accommodation is arranged over two floors spreading beyond 2800 sq. ft. whilst occupying a lovely position backing open countryside.

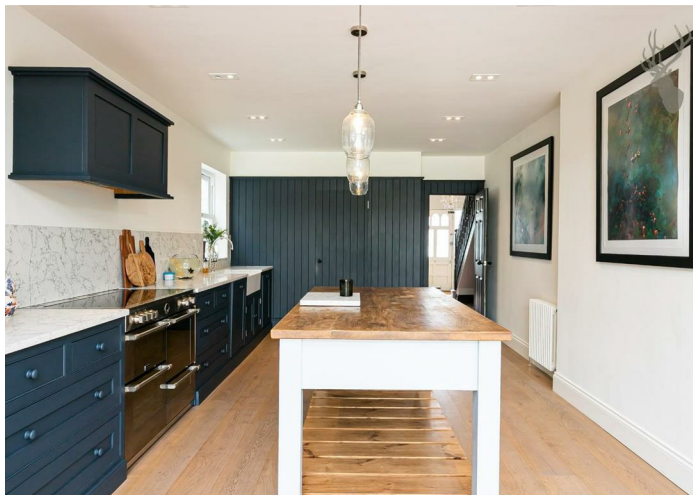
The property offers well-proportioned accommodation arranged over two floors including a spacious living room, separate dining room, a stunning high quality kitchen/family room perfect for entertaining, utility room and cloakroom.

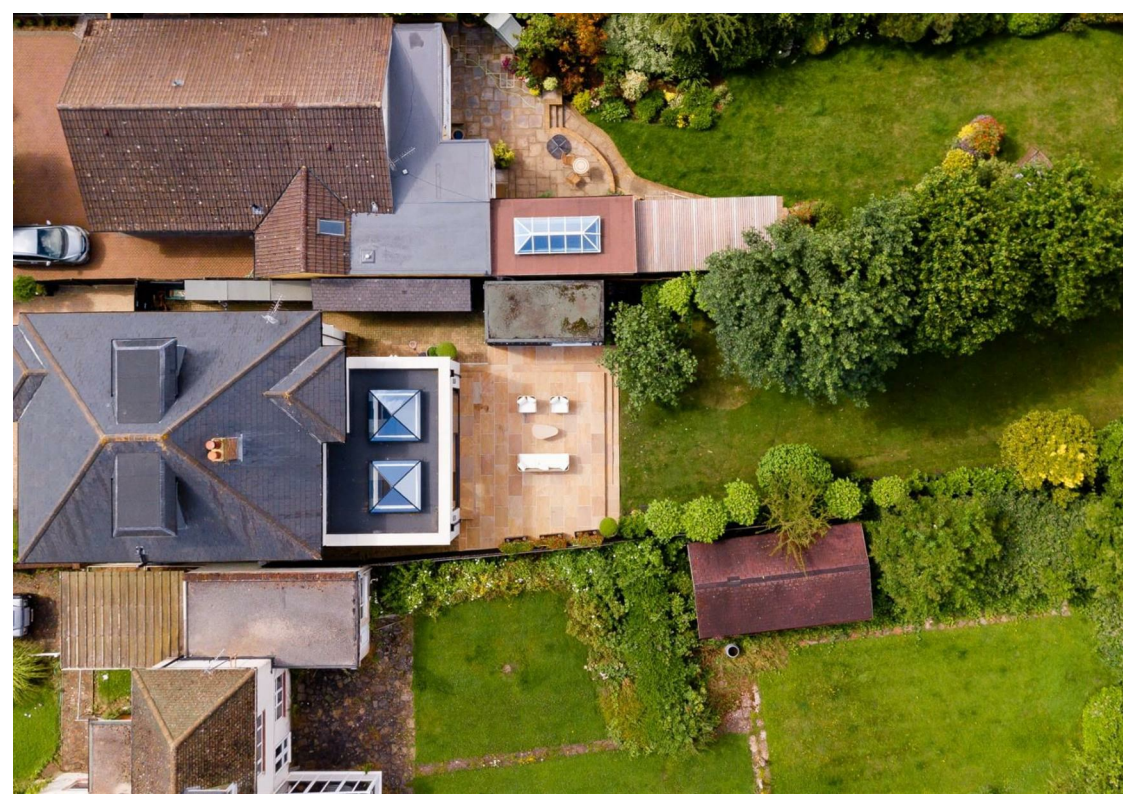
The first floor provides a master bedroom with en-suite bathroom, four further double bedrooms and a family bathroom.

Externally, the property is set back from the road to enable parking for several cars with a redbrick boundary wall and well stocked beds with evergreen shrubs. A pair of double timber gates at the side lead to a useful storage area with several freestanding timber sheds, a log store and an impressive converted garage, currently used as a gymnasium but with great home office potential.

The wonderfully maintained and highly secluded rear garden extends to approximately 170 ft in length and is interspersed with established trees and evergreen shrubs and complemented by a wide, raised flagstone patio terrace with exterior lighting.

Theydon Bois is arranged around its village green, which encompasses a duck pond and hosts various events during the year. There are also local shops that cater for daily needs and a selection of restaurants for dining out. There is a primary school within the village, together with a Montessori nursery. Theydon Bois also has a sporting atmosphere with its golf, tennis and cricket clubs, whilst the tube station makes central London very accessible.





Theydon Park Road



Total area: approx. 264.02 Sq. meters (2842 Sq. feet)
For illustration purposes only - not to scale
www.ipapius.com

BUTLER & STAG

☎ 01992 667666

🏠 4 Forest Drive, Theydon Bois, Essex, CM16 7EY

✉ theydon@butlerandstag.com

www.butlerandstag.uk

IMPORTANT NOTICE - These particulars have been prepared in good faith and they are not intended to constitute part of an offer or contract. We have not performed a structural survey on this property and the services, appliances and specific fittings have not been tested. All photographs, measurements, floor plans and distances referred to are given as a guide and should not be relied upon.